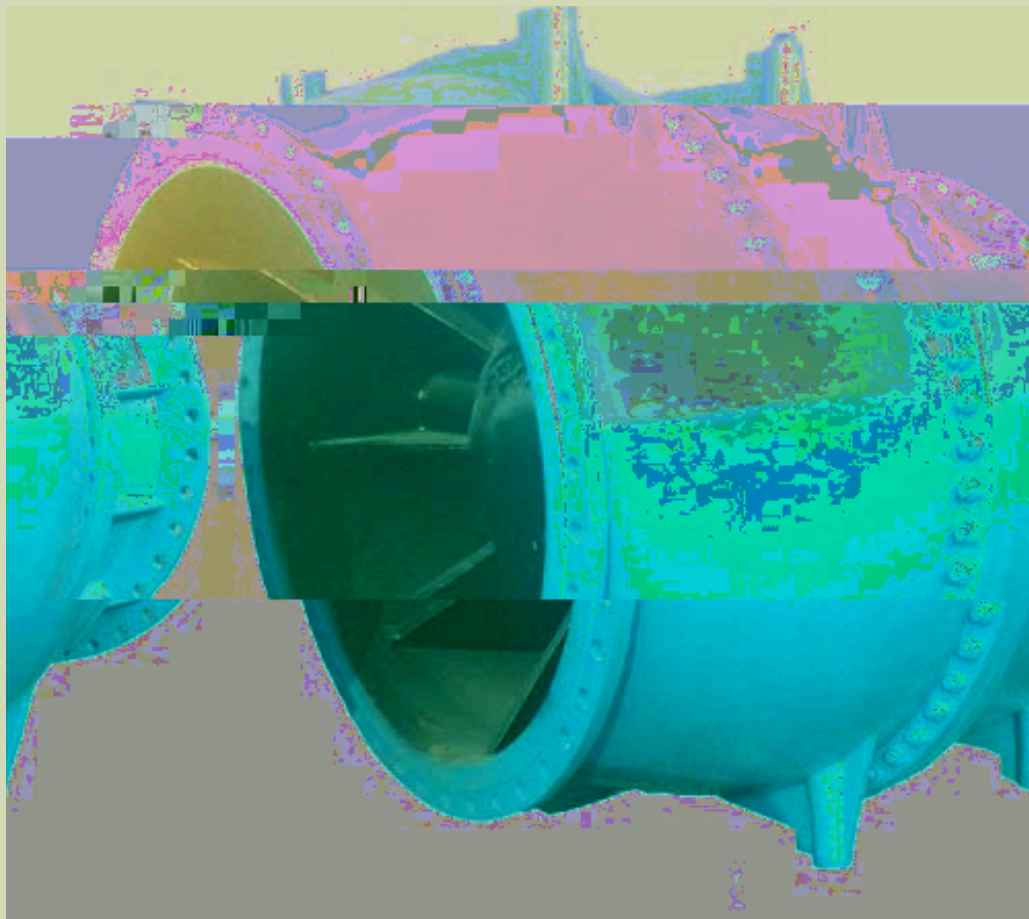
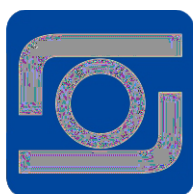


# 产品说明书

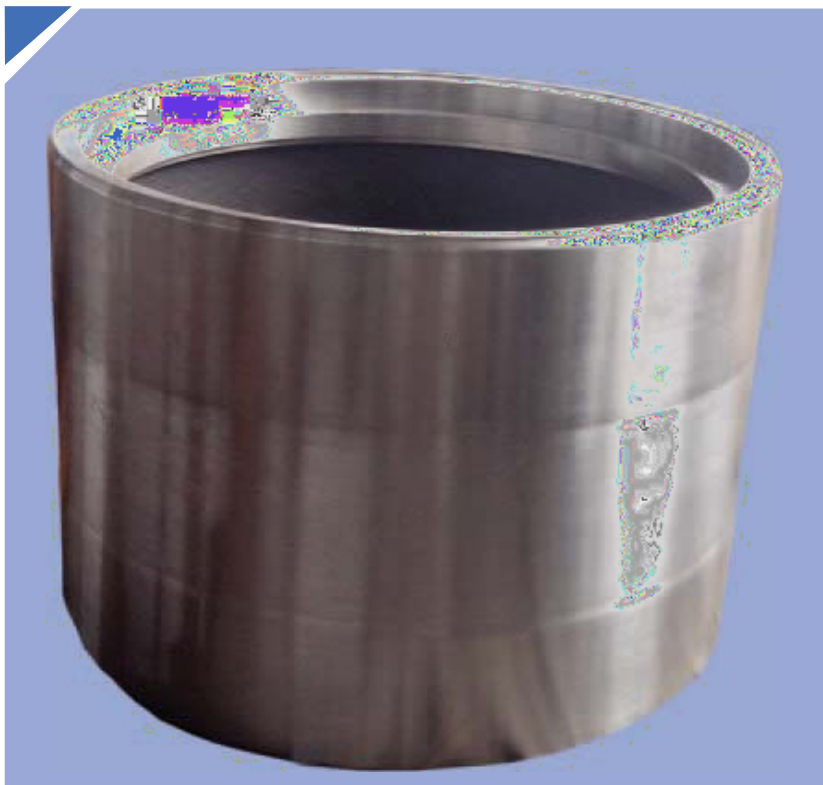
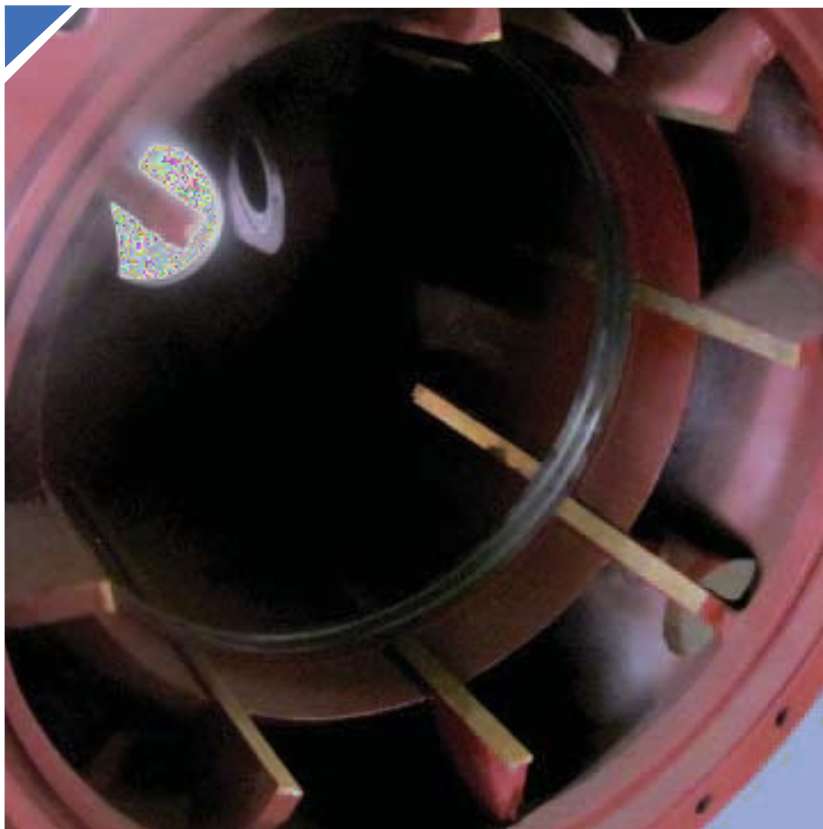


浙江上欧阀门有限公司  
ZHEJIANG SHANGOU VALVE CO., LTD.



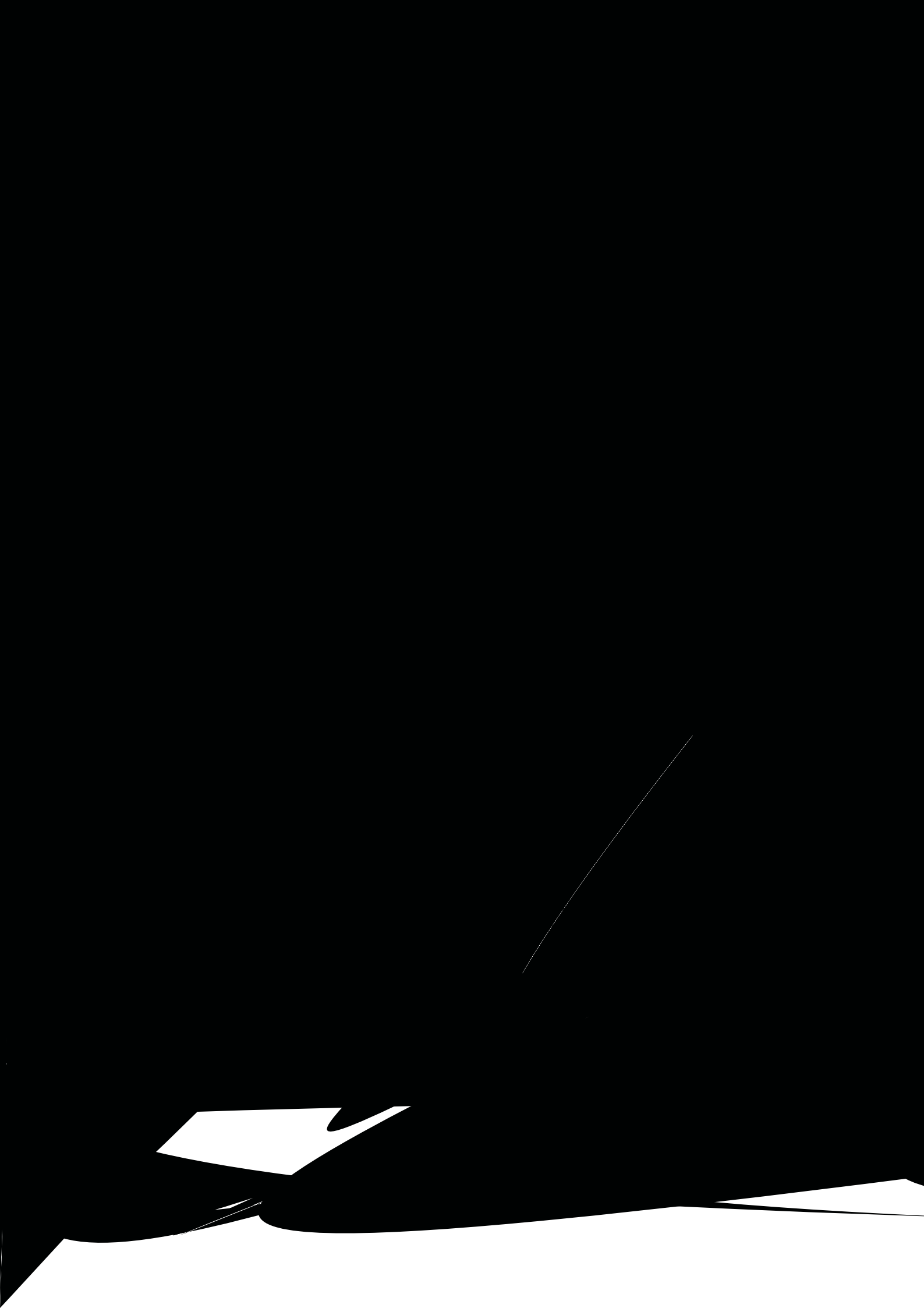
上欧阀门  
SHANGOU VALVE













DN1600 活塞式调节阀

# 适用于多种使用工况



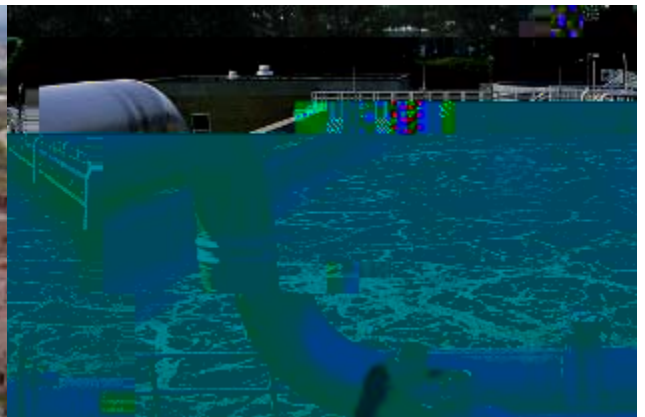
1 水处理



2 城市分水系统



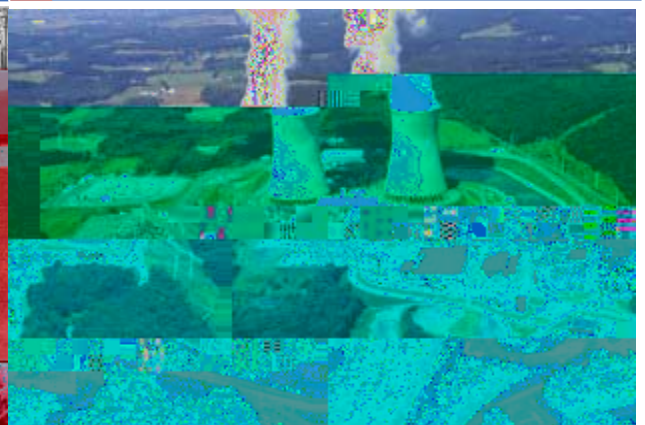
3 采矿



4 污水处理



5 石化



6 电厂



